

# WEARTECH® SHS™ 8000W

Severe Abrasion, Wire Arc Spray

## Application Process

THSP-ASW Twin Wire  
Arc Spraying

## Material Chemistry (wt%)

Chromium	< 22%
Boron	< 5%
Molybdenum	< 5%
Niobium	< 5%
Carbon	< 2%
Manganese	< 1%
Silicon	< 1%
Iron	Balance

## Microhardness (HVO .3)

1000-1200 typical

## Microhardness (Average)

### Elevated Temperature

1030 kg/mm <sup>2</sup>	70° F
912 kg/mm <sup>2</sup>	300° F
620 kg/mm <sup>2</sup>	600° F
309 kg/mm <sup>2</sup>	1200° F
117 kg/mm <sup>2</sup>	1400° F

## Wear Resistance

ASTM G65-04 Procedure B  
2,000 cycles  
Typical mass loss 0.18 g

## Elevated Temp Erosion

Using coal fired boiler fly ash  
for 20 min at 30° impact angle  
( $\alpha$ ) at 1200° F

volume loss (mm<sup>3</sup>)  
 $\alpha = 30^\circ$

SHS8000W	1.50
Competitor 1	3.05
1018 steel plate	8.47

## Bond Strength

ASTM C633-01  
8 ksi (55MPa) typical

## Coating Description

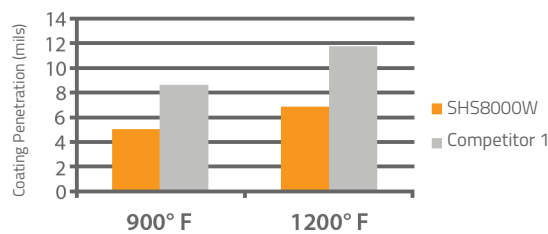
SHS8000W is a glass forming iron based alloy that forms a nanocomposite comprised of a mixed amorphous and nanoscale microstructure when sprayed as a coating. SHS8000W features high wear resistance, elevated temperature erosion resistance and a unique high hardness/toughness combination.

## Key Performance Characteristics

- Excels in elevated temperature environments where fly ash and bed ash erosion occurs
- Superior bond strength without necessity of bond coat
- Excellent abrasion resistance
- Hardness increases as a function of time and temperature

SHS8000W coatings exhibit excellent combinations of corrosion and wear resistance, superior bond strength and high impact resistance. Superior bond strength values signify that this material has exceptional adhesion and cohesion. This also highlights the material's extremely low residual stress (even at high thicknesses) inherent in this coating type. The probability of "pull-out" of individual particles during wear, erosion and other service conditions is extremely low. Low coating permeability results in a highly corrosion resistant barrier. Low oxide content contributes to high bond strength due to the very limited presence of internal voids and other defects. These characteristics provide predictable coating performance across a broad variety of service environments. SHS8000W is especially resistant to elevated temperature oxidation, erosion and corrosion for protecting boiler tubes in coal fired boilers.

High Temperature Erosion  
Bituminous Coal Ash



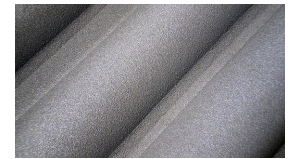
## Elevated Temperature Erosion Resistance

SHS8000W combines erosion with high hardness in elevated temperature environments where fly ash and bed ash erosion occurs. Based on results from aggressive accelerated elevated temperature erosion tests with highly erosive fly ash from a coal fired boiler at 30° and 90° impact angles, SHS8000W coatings can provide increased lifetime over carbon steel substrate and leading industry standard protective coatings.

## Industrial Uses

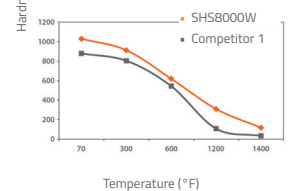
Power Generation  
Oil & Gas

## Power Industry Application



SHS8000W coatings can increase boiler tube service lifetime

## Elevated Temperature Microhardness



SHS8000W excels in elevated temperature environments

# WEARTECH® SHS™ 8000W

Severe Abrasion, Wire Arc Spray

## Coating Properties

Density (g/cm <sup>3</sup> )	7.30
Porosity/Oxides	< 5%
Coefficient of Friction	0.316
Thermal Expansion	
Temperature	Slope
100-500° C	8.53
Thermal Conductivity	
Temperature	(W/mK)
23° C	4.280
50° C	4.678
75° C	5.055
100° C	5.269
125° C	5.505
150° C	5.707

## Impact Resistance

Drop Impact Testing:  
No delamination/cracking  
at 480 in-lbs

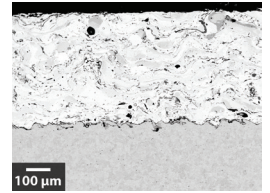
## **Impact Resistance**

Impact testing on SHS8000W coatings was performed using a Gardner Impact testing machine with a 12 lb. test weight and 0.5 in. diameter impact punch dropped from 40 in height. As-sprayed and heat-treated (one hour soak at 600° C, water quenched) coatings of 0.020 in. thickness were tested. The as-sprayed and heat-treated coatings survived 480 in-lbs impact and demonstrated the ability to deform with the substrate without chipping, cracking or delaminating.

## **Universal Applicability**

When SHS8000W is sprayed directly onto substrate alloys using conventional twin wire thermal spray equipment and standard substrate preparation practices, and without a bond coat, extremely high bond strength is achieved. In ASTM C633-01 Adhesion/Cohesion Bond Strength Tests, extremely high bond strength is achieved for SHS8000W coatings on plain carbon steel, far exceeding bond strength of conventional coating materials.

## **SEM Micrograph**



SEM micrograph of SHS8000W coating on a mild substrate

## **CUSTOMER ASSISTANCE POLICY**

The Lincoln Electric Company is manufacturing and selling high quality welding equipment, consumables, and cutting equipment. Our challenge is to meet the needs of our customers and to exceed their expectations. On occasion, purchasers may ask Lincoln Electric for information or advice about their use of our products. Our employees respond to inquiries to the best of their ability based on information provided to them by the customers and the knowledge they may have concerning the application. Our employees, however, are not in a position to verify the information provided or to evaluate the engineering requirements for the particular weldment. Accordingly, Lincoln Electric does not warrant or guarantee or assume any liability with respect to such information or advice. Moreover, the provision of such information or advice does not create, expand, or alter any warranty on our products. Any express or implied warranty that might arise from the information or advice, including any implied warranty of merchantability or any warranty of fitness for any customers' particular purpose is specifically disclaimed.

Lincoln Electric is a responsive manufacturer, but the selection and use of specific products sold by Lincoln Electric is solely within the control of, and remains the sole responsibility of the customer. Many variables beyond the control of Lincoln Electric affect the results obtained in applying these types of fabrication methods and service requirements.

Subject to Change – This information is accurate to the best of our knowledge at the time of printing. Please refer to [www.lincolnelectric.com](http://www.lincolnelectric.com) for any updated information.